

Wellheads

according to API 6A

Wellheads according to API 6A for cavern storage, porous reservoirs, aquifer storages, for gas and oil production, geothermal trees and injection trees up to +350°C (+662°F)

Equipment with maintenance-free, true metal to metal seated valves - manually or automatically operated

Central control unit

Solid block design

Additional equipment including plugs, back-pressure-valves and two-way check valves

API 6 A valves 1 13/16" – 13 5/8"
API 10,000 PSI WP

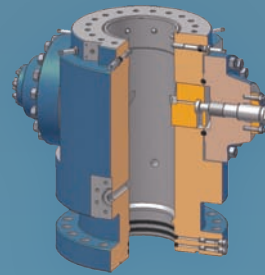
Oil field equipment including rod rotator, lubricator and polished rods

Gate valves



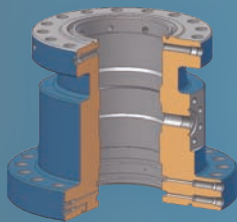
Tubing Hangers & Adapters

API Sizes:	All API Standard Sizes
API Pressure Rating:	2,000 PSI, 3,000 PSI, 5,000 PSI, 10,000 PSI
Sealing Systems:	Elastomer & Metal-to-Metal
Control Line:	With & Without Control Line, Continuous Control Line
API Temperature Class:	K, L, N, P, R, S, T, U
API Material Class:	AA, BB, CC, DD, EE, FF, HH
API PSL Levels:	PSL 1, PSL 2, PSL 3, PSL 3 G



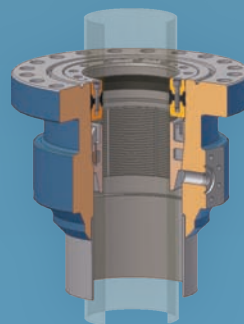
Tension Spool

API Bottom Flange Sizes:	21 1/4", 20 3/4", 18 3/4", 16 3/4", 13 5/8", 11"
API Top Flange Sizes:	16 3/4", 13 5/8", 11", 9", 7 1/16"
API Pressure Rating:	2,000 PSI, 3,000 PSI, 5,000 PSI, 10,000 PSI
Sealing Systems:	Single-P, Double-P, X-Bushing, Metal-to-Metal
API Temperature Class:	K, L, N, P, R, S, T, U
API Material Class:	AA, BB, CC, DD, EE, FF, HH
API PSL Levels:	PSL 1, PSL 2, PSL 3, PSL 3 G



Casing Spool

API Bottom Flange Sizes:	21 1/4", 20 3/4", 18 3/4", 16 3/4", 13 5/8", 11", Quick and Clamp connector
API Top Flange Sizes:	16 3/4", 13 5/8", 11", 9", 7 1/16", Quick and Clamp connector
API Pressure Rating:	2,000 PSI, 3,000 PSI, 5,000 PSI, 10,000 PSI
Sealing Systems:	Single-P, Double-P, X-Bushing, Metal-to-Metal
API Temperature Class:	K, L, N, P, R, S, T, U
API Material Class:	AA, BB, CC, DD, EE, FF, HH
API PSL Levels:	PSL 1, PSL 2, PSL 3, PSL 3 G



Casing Head Housing

Bottom Connectors:	Slip on Weld Threaded Slip Locking System (SLS)
API Top Size Flanges:	21 1/4", 20 3/4", 18 3/4", 16 3/4", 13 5/8", 11", 9", 7 1/16" Quick and Clamp connector
API Pressure Rating:	2,000 PSI, 3,000 PSI, 5,000 PSI, 10,000 PSI
API Temperature Class:	K, L, N, P, R, S, T, U
API Material Class:	AA, BB, CC, DD, EE, FF, HH
API PSL Levels:	PSL 1, PSL 2, PSL 3, PSL 3 G